

Red gurnard (*Chelidonichthys cuculus*) in subareas 3–8 (Northeast Atlantic)

ICES advice on fishing opportunities

ICES cannot provide advice on fishing opportunities for this stock because of a lack of reliable catch data.

ICES advice on conservation aspects

ICES has not identified any conservation aspects.

Stock development over time

ICES cannot assess the stock and exploitation status relative to MSY and precautionary approach (PA) reference points because the reference points are undefined.

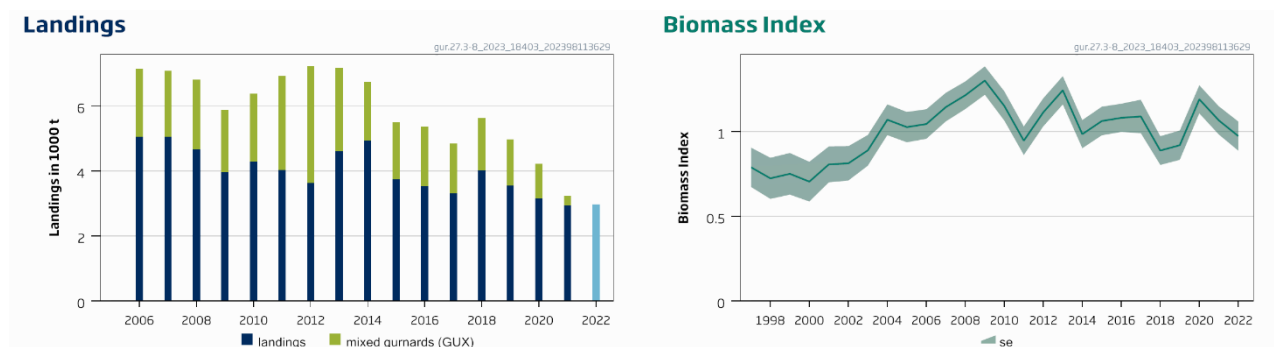


Figure 1 Red gurnard in subareas 3–8. Summary of the stock assessment. Official landings of red gurnard and “mixed” gurnards in subareas 3–8 (2006–2021). Landings data for 2022 correspond only to the preliminary landings reported as red gurnard GUR (light blue). The biomass index is for red gurnard only.

Conservation status

ICES is not aware of any information on stock/species-specific conservation status.

Catch scenarios

The biomass index shows an increasing trend up to the mid-2000s, and since then it has fluctuated without trend. However, without accurate landings data resolved to species level and reliable information on discards, it is not possible to provide catch scenarios.

Basis of the advice

Table 1 Red gurnard in subareas 3–8. The basis of the advice.

Advice basis	Precautionary approach
Management plan	ICES is not aware of any management plan for red gurnard in this area

Quality of the assessment

A number of surveys reporting red gurnard have been examined and an index developed which describes changes in biomass across the stock distribution area from 1997 onwards (ICES, 2021a).

Issues relevant for the advice

Reporting by species continues to be a major problem in estimating the landings of all gurnards and thus also red gurnard. Sampling under the Data Collection Framework (DCF) regulation is the main source of information to estimate the total

landings of red gurnard. Mixed gurnard landings are known to contain red gurnard, but the proportion cannot presently be quantified and therefore the reported landings in tables 3–7 represent minimum estimates. This assessment requires estimates of both red and “mixed” landings in order to provide advice. Landings data provided for 2022 correspond only to the preliminary landings reported as red gurnards.

Discarding is estimated to be high in some fisheries. Discard rates range from 19% to 61% of the catches of specific fleets (ICES, 2023b).

The collection of species-specific data on landings and discards of red gurnard is required for ICES to provide catch advice.

Reference points

There are no reference points defined for this stock.

Basis of the assessment

Table 2 Red gurnard in subareas 3–8. Basis of the assessment and advice.

ICES stock data category	3 (ICES, 2023a).
Assessment type	Survey trends-based assessment (ICES, 2021b).
Input data	Scottish West Coast Groundfish Surveys, Q1 and Q4 (G4748 & G4815), Scottish West Coast IBTS Q1 and Q4 (G1179 & G4299), Western Channel Beam Trawl Survey (BTS; B2732), French Channel Groundfish Survey (G3425), French Southern Atlantic Bottom Trawl Survey (EVHOE; G9527), Irish Groundfish Survey (IE-IGFS; G7212) and North Sea IBTS-Q1 (G1022) and Q4 (G2829).
Discards and bycatch	Discarding is known to take place, but discards cannot be fully quantified.
Indicators	None.
Other information	This stock was benchmarked at WKWEST in 2021 (ICES, 2021).
Working group	Working Group on Widely Distributed Stocks (WGWISE; ICES 2023b).

History of the advice, catch, and management

Table 3 Red gurnard in subareas 3–8. ICES advice as well as official and ICES landings. All weights are in tonnes.

Year	ICES advice	Landings corresponding to advice	Agreed TAC	Official landings	ICES estimates
2006		-	None	5047	
2007		-	None	5049	
2008		-	None	4664	
2009		-	None	3966	
2010		-	None	4278	
2011		-	None	4029	
2012	No increase in catch	-	None	3629	
2013	20% reduction in catches	-	None	4598	
2014	Same catch value as advised for 2013	-	None	4946	
2015	Same catch value as advised for 2013	-	None	3744	
2016	Precautionary approach (decrease catches by at least 20%)	≤ 3618	None	3526	3547
2017	Precautionary approach (same advised catch value as given for 2016)	≤ 3618	None	3311	3061
2018	Precautionary approach	≤ 3618	None	4014	3983
2019	Precautionary approach (same advised catch value as given for 2018)	≤ 3618	None	3551	
2020	Precautionary approach (decrease catches by at least 20%)	≤ 2894	None	3142	
2021	Precautionary approach (same advised catch value as given for 2020)	≤ 2894	None	2941	
2022	No advice	-	None	2971*	2922
2023	No advice	-	None		
2024	No advice	-			
2025	No advice	-			

* Preliminary landings, including below minimum size (BMS) landings.

History of the catch and landings

Table 4 Red gurnard in subareas 3–8. Catch distribution by fleet in 2022 as officially reported as red gurnard to ICES.

Catch	Landings*	Discards
Unknown	100% undefined gears	Unknown
	2971 tonnes	

* Preliminary.

Table 5 Red gurnard in subareas 3–8. History of commercial landings are presented by country. All weights are in tonnes.

Year	Belgium	Denmark	France	Germany	Guernsey	Ireland	Isle of Man	Jersey	NL	Portugal	Spain	UK	Total
2006	313	0	4552	0	10	0	0	0	57	0	0	115	5047
2007	328	0	4494	0	4	0	0	1	66	0	0	156	5049
2008	352	0	4045	0	8	0	0	+	92	+	0	166	4664
2009	227	0	3307	0	6	0	1	+	160	1	0	263	3966
2010	237	0	3426	0	2	0	0	0	251	0	0	362	4278
2011	306	0	3168	0	2	0	1	1	295	1	0	257	4029
2012	306	0	2698	0	4	26	0	3	329	7	0	257	3629
2013	288	0	3152	0	9	16	2	3	267	+	532	329	4598
2014	263	0	3781	0	6	0	5	3	241	1	364	283	4946
2015	187	0	2919	0	3	0	+	2	210	1	82	341	3744
2016	238	0	2598	0	2	9	1	3	224	+	70	381	3526
2017	265	0	2396	0	1	9	4	0	226	+	75	335	3311
2018	314	0	2968	0	1	1	1	0	306	+	78	347	4014
2019	289	0	2448	0	5	3	+	1	247	+	80	478	3551
2020	211	0	2327	0	2	8	+	1	235	+	101	257	3142
2021	92	0	2244	0	+	7	+	0	160	+	68	370	2941
2022*	117	1	2327	3	+	7	+	0	128	0	75	312	2971

* Preliminary.

+ Landings < 0.5 tonnes.

Table 6 Red gurnard in subareas 3–8. History of commercial landings; official values are presented by area. All weights are in tonnes.

Year	ICES divisions																				Total		
	3.a	4.a	4.b	4.c	5.b	6.a	6.b	7.a	7.b	7.c	7.d	7.e	7.f	7.g	7.h	7.j	7.k	8.a	8.b	8.c		8.d	8.e
2006	0	13	83	64	0	32	1	11	9	12	1101	2804	229	16	446	5	+	153	60	1	5	0	5047
2007	0	12	120	55	2	21	0	7	7	15	1229	2674	246	15	437	4	+	139	59	3	2	0	5049
2008	0	34	64	54	+	28	3	5	7	16	1236	2451	249	9	408	5	+	66	24	3	1	0	4664
2009	0	58	59	92	0	94	2	4	8	6	1293	1557	112	22	510	7	0	98	40	1	3	0	3966
2010	0	79	63	86	0	101	46	13	8	10	1531	1608	132	23	433	9	0	100	33	0	2	0	4278
2011	0	66	29	51	0	69	54	13	5	6	1295	1753	124	20	372	9	0	112	46	1	3	+	4029
2012	0	83	71	78	0	51	7	8	2	5	1244	1441	145	53	294	2	+	83	50	8	1	+	3629
2013	0	88	109	60	0	47	0	10	2	6	1193	1692	170	58	477	2	0	79	72	532	1	0	4598
2014	0	102	52	68	0	47	3	7	1	2	1294	1642	115	19	1069	1	0	82	75	363	3	+	4946
2015	0	133	102	53	0	58	1	4	3	1	790	1553	87	6	703	1	+	95	70	81	2	+	3744
2016	+	112	83	117	+	76	1	11	3	1	906	1270	114	16	608	1	+	87	63	56	1	0	3526
2017	0	53	44	90	0	27	1	14	1	+	874	1424	83	38	473	3	0	78	48	59	1	0	3311
2018	0	109	40	113	+	43	0	7	+	+	903	1785	164	28	631	4	+	80	43	62	2	0	4014
2019	0	128	19	75	+	84	+	12	1	+	959	1516	75	24	477	5	+	73	38	65	+	0	3551
2020	0	57	13	65	2	51	4	12	1	4	685	1504	90	19	424	4	+	69	51	88	1	0	3142
2021	0	60	18	55	0	112	4	4	2	+	596	1390	46	15	471	4	0	61	40	62	+	0	2941
2022*	1	64	10	61	+	40	1	4	+	0	520	1549	45	24	481	5	0	61	38	67	+	0	2971

* Preliminary.

+ Landings < 0.5 tonnes.

Summary of the assessment

Table 7 Red gurnard in subareas 3–8. Assessment summary. All weights are in tonnes.

Year	Biomass index	Red gurnard landings	'Mixed' gurnard landings*	Unidentified/tub gurnard landings*
1997	0.662			
1998	0.576			
1999	0.613			
2000	0.549			
2001	0.684			
2002	0.691			
2003	0.782			
2004	0.967			
2005	0.925			
2006	0.943	5047	2100	2995
2007	1.034	5049	2024	3416
2008	1.093	4664	2143	2452
2009	1.162	3966	1915	3041
2010	1.040	4278	2096	1349
2011	0.843	4029	2888	3112
2012	1.006	3629	3599	3451
2013	1.117	4598	2578	3756
2014	0.883	4946	1805	4483
2015	0.959	3744	1748	5712
2016	0.977	3526	1838	6919
2017	0.985	3311	1537	6355
2018	0.780	4014	1608	4523
2019	0.815	3551	1416	3775
2020	1.072	3142	1074	4038
2021	0.964	2941	292	3195
2022	0.870	2971**		

* Red gurnards are known to constitute a portion of the mixed gurnard landings. It is also likely that they are present in the landings reported as "GUU", which is the species code for tub gurnard, but which appears to be misinterpreted as unidentified gurnards by some data providers.

** Preliminary.

Sources and references

ICES. 2012. ICES Implementation of Advice for Data-limited Stocks in 2012 in its 2012 Advice. ICES CM 2012/ACOM:68. 42 pp. <https://doi.org/10.17895/ices.pub.5322>

ICES. 2021. Benchmark Workshop on selected stocks in the Western Waters in 2021 (WKWEST). ICES Scientific Reports, 3:31. 504 pp. <https://doi.org/10.17895/ices.pub.8137>

ICES. 2023a. Advice on fishing opportunities. In Report of the ICES Advisory Committee, 2023. ICES Advice 2023, section 1.1.1. <https://doi.org/10.17895/ices.advice.22240624>

ICES. 2023b. Working Group on Widely Distributed Stocks (WGWIDE). ICES Scientific Reports. 5:82. <https://doi.org/10.17895/ices.pub.24025482>

[Download the stock assessment data and figures.](#)

Recommended citation: ICES. 2023. Red gurnard (*Chelidonichthys cuculus*) in subareas 3–8 (Northeast Atlantic). In Report of the ICES Advisory Committee, 2023. ICES Advice 2023, gur.27.3-8, <https://doi.org/10.17895/ices.advice.21856476>